

# Elements of fun



FURNISHINGS MIMIC THE LOFTS AT I-ZONE CONVERSION PROJECT LISA VAN DE VEN

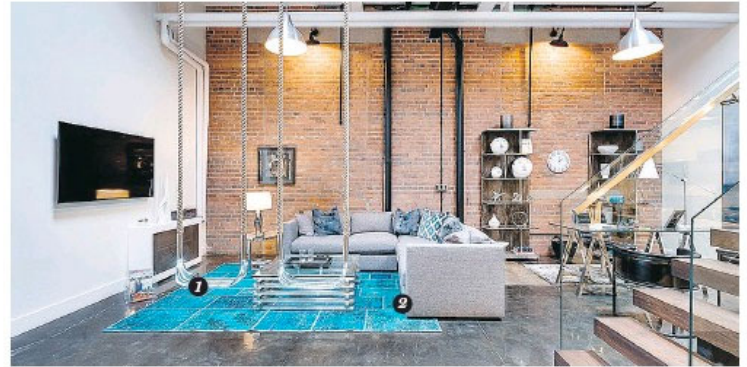
National Post (Latest Edition) 5 Aug 2017

“It’s a great backdrop for colourful friends,” interior designer Peter Lunney says of Unit 122, the loft space he designed for Atria Development’s i-Zone conversion project. The suite was styled for entertaining, with fun accents, polished concrete floors and bright pops of colour – all juxtaposed against classic furniture, natural woods and a sleek, contemporary kitchen. Lunney’s design showcases the loft’s original features, including a brick wall, steel beams and wood ceilings. “We were just looking to create a space where the furnishings mimic the rustic-ness of the loft,” says Lunney, of Fleur-de-lis Interior Design. “We wanted it to be a little sophisticated but at the same time have fun elements.” Suites at i-Zone are being converted one by one, with sizes ranging from 1,700 to 2,300 square feet and prices starting at \$ 1.249 million. For a sales appointment, call 416-4657850, or visit [izoneatria.com](http://izoneatria.com) for information.

“People who come into the suite, they migrate over to the swings,” Lunney says. Purchased at Eurolite and lit up with colourful LED lighting, they create a whimsical addition to the unit, accentuating the ceiling height and contrasting against the more classic living room furniture.

Lunney created contrast against the original brick wall by introducing vivid blue accents — including this reclaimed patchwork area rug from Elte. The sectional sofa is a more neutral grey, while accent pillows carry through the blue, and a chrome and glass coffee table offers a contemporary accent.

“Everyone seems to be into that hotel feel,” Lunney says, which is why he opted for a more tailored approach to the bedding in the master bedroom upstairs. The tall white velvet headboard — complete with contemporary chrome trim — offers privacy from the open bathroom behind.



Oversized steelblue velvet chairs create a cosy seating area upstairs, to either relax and watch a movie, or look down for some people watching. “You can swivel and watch people swing on the swings below,” says Lunney, who paired the chairs with a gold-green tufted ottoman from Elte.