

Long time coming

Unveiling downtown Oshawa's first residential condo in 20 years

THERE'S LANDMARK news in downtown Oshawa. This weekend, Atria Developments will introduce Parkwood Residences — a condominium that breaks new ground in urban living. Spanning an entire city block along the north side of Bond Street between Prince and Centre Streets, this is the first residential condominium constructed in Oshawa in more than 20 years.

Named for Parkwood Estate, the former home of Oshawa benefactor R.S. McLaughlin, Parkwood Residences offers 120 suites in two connected buildings, a 10-storey tower with 64 suites and a 6-storey terraced galleria with 56 suites. The buildings once served as a commercial centre and will be fully refurbished to accommodate residential living at its height — a form of urban revitalization for which family-owned Atria is well known. Using only the steel su-

perstructure and concrete from the original buildings, everything else in the condominium will be new, from the grand foyer to its rooftop terrace. Owners will live in the hub of convenient amenities that include the GO bus terminal, shops, parks and restaurants.

Using only the steel superstructure and concrete from the original buildings, everything else in the condominium will be new ...

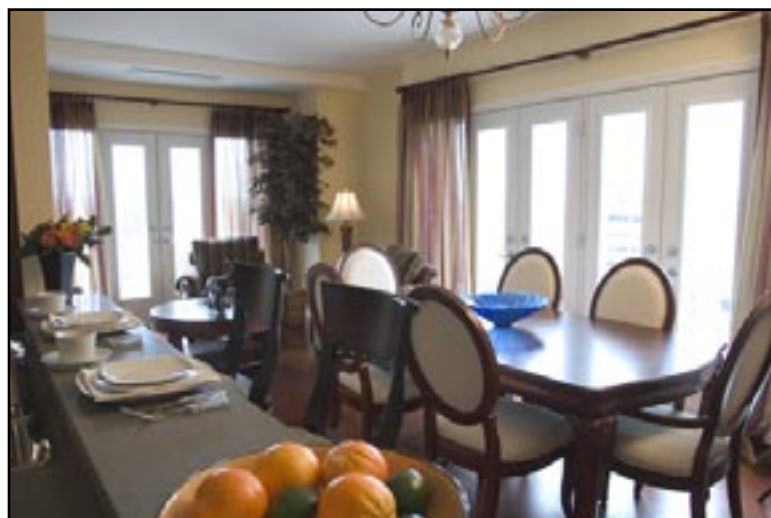
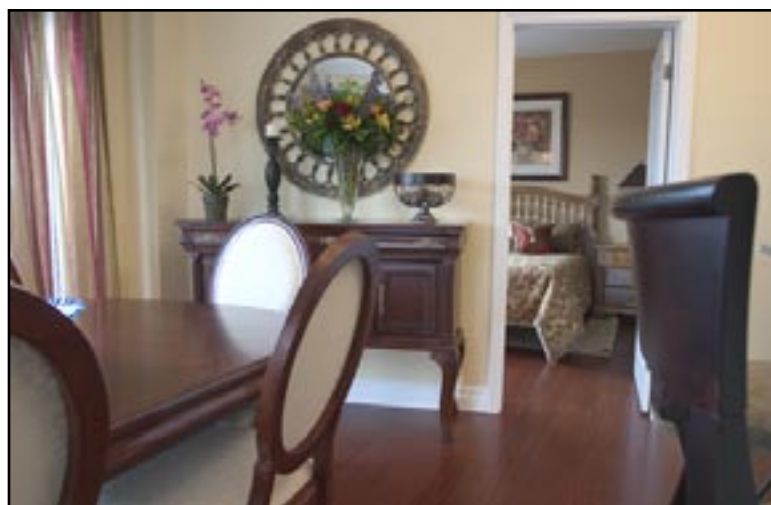
The elegantly appointed one-bedroom, one-bedroom plus den, two-bedroom and two-bedroom plus den residences range in size from 476 sq.

ft. to 1,168 sq. ft. and are priced from \$99,900. In addition, a limited number of private rooftop terraces are available — perfect for gardening or as a personal barbecue terrace.

Beginning on Saturday, May 29, visitors can tour two striking, fully furnished model suites by Fleur-de-lis Interior Design — the 581-sq.-ft. one-bedroom Baker and the 1,074-sq.-ft. two-bedroom plus den Valleyview — at the sales centre on the 9th floor at 44 Bond Street West.

For more information or to register for the preview opening, simply call 905-404-1400 or visit the project online at www.parkwoodresidences.com.

■ **RIGHT: EUROPEAN-INSPIRED open concept kitchens come complete with Shaker-style cabinets and five premium brand name appliances**



■ **TOP LEFT: THE MASTER** bedroom retreat opens onto a spacious ensuite
■ **RIGHT: THE ELEGANT** two-bedroom plus den Valleyview design is perfect for entertaining in grand style